

P3010 Vacuum switch, adjustable with analog output

P3010 Vacuum switch, adjustable with analog output



- Patented multistage COAX® cartridge - MINI - with Pi, Si, Xi cartridge.
- 1 output NO and 1 analog output.
- Includes a flow-through silencer and a built-in vacuum filter for harsh environments.
- High system reliability in case of fluctuating or low feed pressure.
- Suitable for fast and reliable evacuation in sealed systems.

Technical data

Description	Unit	Value
Feed pressure, max. (pump)	psi	101.5
Noise level	dBA	66-68
Pressure, max (switch)	psi	29
Vacuum range	-inHg	0-30
Material		PP, PA, AI, PC, POM, NBR, SS
Temperature range	°F	14-122
Weight	oz	7.69-16.6
Function		NO, NPN/PNP
Hysteresis	%	1-15
Supply voltage	VDC	10.8-30
Voltage output	VDC	1-5
Safety classification		IP40
Analogue output, current max. (load resistance min. 5kΩ)	mA	1
Humidity	% RH	35-85
Response time	ms	2
Accuracy at 25°C		±3% F.S.
Current consumption, max	mA	17
High-voltage resistant	VAC	500
Insulation at 500 VDC	MOhm	100
Vibration resistance, 1,5 mm, XYZ, 2 h	Hz	10-500
Electric connection		M8 4 pin male
Current output, max	mA	80

Vacuum flow

COAX® Cartridge	Feed pressure*	Air consumption	Vacuum flow (scfm) at different vacuum levels (-inHg)	Max vacuum
-----------------	----------------	-----------------	---	------------

	psi	scfm	0	3	6	9	12	15	18	21	24	27	-kPa
Pi12-3	45	0.93	2.97	1.27	0.93	0.57	0.40	0.30	0.21	0.13	0.06	—	27.0
Si08-3	87	0.93	2.84	1.55	1.17	0.74	0.49	0.36	0.28	0.17	—	—	22.2
Xi10-3	72.5	0.97	3.03	1.48	1.06	0.70	0.40	0.32	0.23	0.15	0.10	0.02	27.8

For vacuum flows at other feed pressures, see COAX® Cartridge data sheets. *Feed pressure tolerance, +/- 1.45 psi

Evacuation time													
COAX® Cartridge	Feed pressure*	Air consumption	Evacuation time (s/cf) to reach different vacuum levels (-inHg)										Max vacuum
			psi	scfm	3	6	9	12	15	18	21	24	
Pi12-3	45	0.93	2.27	6.52	13.9	28.3	48.2	73.7	110	178	—	—	27.0
Si08-3	87	0.93	2.83	7.08	13.6	22.7	36.8	56.7	82.2	—	—	—	22.2
Xi10-3	72.5	0.97	2.55	7.37	14.2	25.5	42.5	62.3	96.3	147	249	—	27.8

For evacuation times at other feed pressures, see COAX® Cartridge data sheets. *Feed pressure tolerance, +/- 1.45 psi

Blow flow															
COAX® cartridge	Feed pressure	Air consumption	Blow flow (scfm) at different pressure levels (psi)												Max pressure
			psi	scfm	0	3	6	9	10	12	13	15	16	17	
Pi12-3	87	1.59	3.96	2.97	2.82	2.37	2.18	2.18	2.18	2.18	2.12	2.01	1.82	1.67	20
Si08-3	87	0.93	3.77	2.46	2.18	1.82	1.70	1.59	1.40	1.12	—	—	—	—	10
Xi10-3	87	1.14	3.81	2.75	2.33	2.08	1.80	1.78	1.67	1.50	1.29	—	—	—	13

Ordering information

1. Select housing P3010 Code

Housing, connection Ø=6 mm	00
Housing, connection 1/8" NPSF	01

2. COAX® cartridge modules P3010 Code

COAX® cartridge module Pi12-3FSx1	AE
COAX® cartridge module Pi12-3FSx1, non-return valve	AF
COAX® cartridge module Pi12-3FSx2	AG
COAX® cartridge module Pi12-3FSx2, non-return valve	AH
COAX® cartridge module Si08-3FSx1	AA
COAX® cartridge module Si08-3FSx1, non-return valve	AB
COAX® cartridge module Si08-3FSx2	AC
COAX® cartridge module Si08-3FSx2, non-return valve	AD
COAX® cartridge module Xi10-3FSx1	AI
COAX® cartridge module Xi10-3FSx1, non-return valve	AJ
COAX® cartridge module Xi10-3FSx2	AK
COAX® cartridge module Xi10-3FSx2, non-return valve	AL

3. Select connection and function module P3010 Code

Function Quick-release connection, 10 and 6 mm, 3 cm ³	04
Function Quick-release connection, 8 and 6 mm, 30 cm ³	05
Function Quick-release connection, 8 and 6 mm, 60 cm ³	06
Function Quick-release connection, 10 and 6 mm, 30 cm ³	07
Function Quick-release connection, 10 and 6 mm, 60 cm ³	08
Function Quick-release connection, 1/4" NPSF and 6 mm, 3 cm ³	09
Function Quick-release connection, 1/4" NPSF and 6 mm, 30 cm ³	10
Function Quick-release connection, 1/4" NPSF and 6 mm, 60 cm ³	11
Function Quick-release connection, 8 and 6 mm, 3 cm ³	12

For detailed information on Quick-release, see separate datasheet.

4. Select ES P3010 Code

No energy saving	AA
Valve DS23	AB

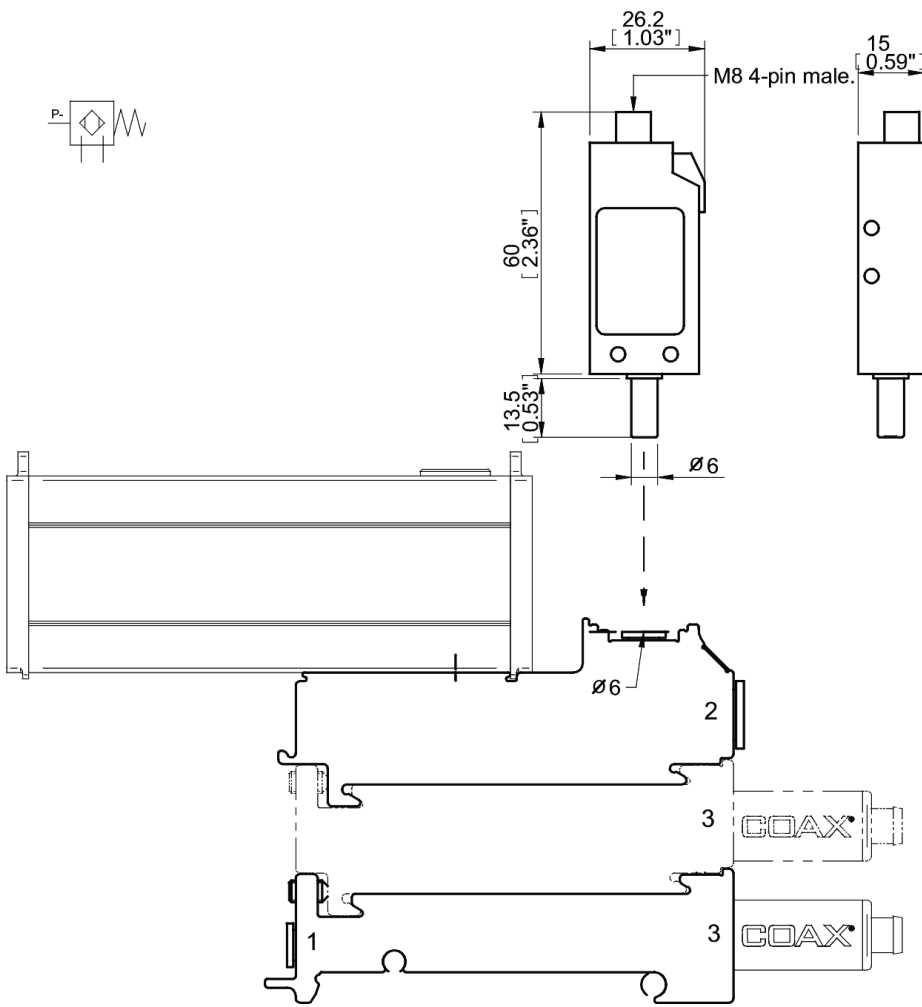
For detailed information on Valve DS 23, see separate datasheet.

5. Select vacuum sensing P3010 Code

Vacuum switch, adjustable, PNP NO MM8	01
Vacuum switch, adjustable, NPN NO MM8	02

Example Ordering number

Housing, connection Ø 6 mm Pi12-3FSx1, Function Quick-release module 10/6 3cm ³ , no energy saving, Vacuum switch PNP NO MM8	P3010.00.AE.04.AA.01
---	----------------------



Ordering information,
accessories

Description

Part No.

Sealing kit P3010, NBR

01.04.201

The sealing kit includes flap valves, compressed air filter and vacuum filter.