

P3010 CU



P3010 CU

- Patented multistage COAX® cartridge - MINI - with Pi, Si, Xi cartridge.
- Integrated Control Unit (CU) with electric valves for vacuum on-off and blow-off control.
- Mechanical valve for blow-off flow adjustment.
- Slim, compact, configurable and modular design.

Technical data

Description	Unit	Value
Feed pressure, max.	psi	101.5
Noise level	dBa	66–68
Material		PA, NBR, Al, SS, PMMA
Temperature range	°F	32-122
Weight	oz	8.32-11.1
Voltage	VDC	24 (22–28)
Safety classification		IP65 [NEMA 4]
Humidity	%RH	90
Current consumption, nominal	mA	60
Ripple, max.	V _p	1 V _{rms}
Flow, blow-off	scfm	0–15.9
Function, on/off		NC

Vacuum flow

COAX® Cartridge	Feed pressure* psi	Air consumption scfm	Vacuum flow (scfm) at different vacuum levels (-inHg)										Max vacuum -kPa
			0	3	6	9	12	15	18	21	24	27	
Pi12-3	45	0.93	2.97	1.27	0.93	0.57	0.40	0.30	0.21	0.13	0.06	—	27.0
Si08-3	87	0.93	2.84	1.55	1.17	0.74	0.49	0.36	0.28	0.17	—	—	22.2
Xi10-3	72.5	0.97	3.03	1.48	1.06	0.70	0.40	0.32	0.23	0.15	0.10	0.02	27.8

For vacuum flows at other feed pressures, see COAX® Cartridge data sheets. *Feed pressure tolerance, +/- 1.45 psi

Evacuation time

COAX® Cartridge	Feed pressure* psi	Air consumption scfm	Evacuation time (s/cf) to reach different vacuum levels (-inHg)										Max vacuum -inHg
			3	6	9	12	15	18	21	24	27		
Pi12-3	45	0.93	2.27	6.52	13.9	28.3	48.2	73.7	110	178	—	27.0	
Si08-3	87	0.93	2.83	7.08	13.6	22.7	36.8	56.7	82.2	—	—	22.2	

Xi10-3	72.5	0.97	2.55	7.37	14.2	25.5	42.5	62.3	96.3	147	249	27.8
For evacuation times at other feed pressures, see COAX® Cartridge data sheets. *Feed pressure tolerance, +/- 1.45 psi												

Blow flow																
COAX® cartridge	Feed pressure psi	Air consumption scfm	Blow flow (scfm) at different pressure levels (psi)													Max pressure psi
			0	3	6	9	10	12	13	15	16	17	19	20		
Pi12-3	87	1.59	3.96	2.97	2.82	2.37	2.18	2.18	2.18	2.18	2.12	2.01	1.82	1.67	20	
Si08-3	87	0.93	3.77	2.46	2.18	1.82	1.70	1.59	1.40	1.12	—	—	—	—	10	
Xi10-3	87	1.14	3.81	2.75	2.33	2.08	1.80	1.78	1.67	1.50	1.29	—	—	—	13	

Ordering information

1. Select housing P3010 Code

Housing, connection Ø=6 mm 00

Housing, connection 1/8" NPSF 01

2. COAX® cartridge modules P3010 Code

COAX® cartridge module Pi12-3FSx1 AE

COAX® cartridge module Pi12-3FSx1, non-return valve AF

COAX® cartridge module Pi12-3FSx2 AG

COAX® cartridge module Pi12-3FSx2, non-return valve AH

COAX® cartridge module Si08-3FSx1 AA

COAX® cartridge module Si08-3FSx1, non-return valve AB

COAX® cartridge module Si08-3FSx2 AC

COAX® cartridge module Si08-3FSx2, non-return valve AD

COAX® cartridge module Xi10-3FSx1 AI

COAX® cartridge module Xi10-3FSx1, non-return valve AJ

COAX® cartridge module Xi10-3FSx2 AK

COAX® cartridge module Xi10-3FSx2, non-return valve AL

3. Select connection and function module P3010 Code

Function CU NC 29

Function CU NO 33

4. Select ES P3010 Code

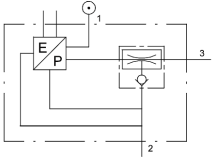
No energy saving AA

5. Select vacuum sensing P3010 Code

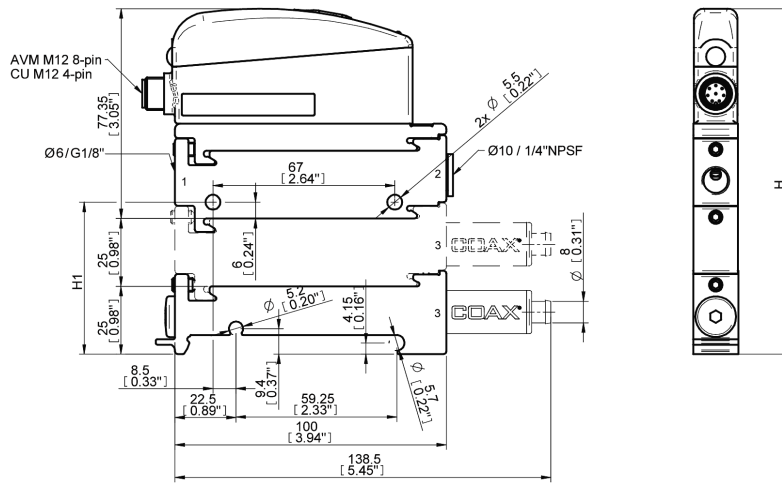
No vacuum sensing 00

Example Ordering number

Housing, connection 1/8" NPSF Pi12-3FSx1, Function CU NC, no energy saving function, no vacuum sensing P3010.01.AE.29.AA.00



COAX® Cartridge	H	H1
1	102,4 [4.03"]	31 [1.22"]
2	127,4 [5.01"]	56 [2.2"]



Ordering information, accessories

Description	Part No.
Cable M12 4-pin female, PUR, L=5m*	01.21.817
Cable M12 4-pin female, M12 4-pin male, PUR, L=2m	01.18.322
Sealing kit P3010, NBR	01.04.201

The sealing kit includes flap valves, compressed air filter and vacuum filter. *) Pin No. 1 is not used.