

P5010



- New patented COAX® push-in technology allows insertion and removal of the cartridge without tools.
- Available with a two or three-stage COAX® cartridge MIDI. Choose an Si cartridge for extra vacuum flow, a Pi cartridge for high performance at low feed pressure or an Xi cartridge when high flow and deep vacuum is needed.
- Integrated flow-through silencer that is unaffected by dust and dirt.
- Substantially lower air-consumption as compared to conventional ejectors of similar sizes.
- Slim, compact, configurable and modular design.
- Low weight.

Technical data

Description	Unit	Value
Feed pressure, max	psi	101.5
Noise level *)	dB(A)	68–70
Temperature range	°F	14–176
Weight	lb	0.50–1.32
Material		AL, CuZn, NBR, PA, SS, PE

*) At vacuum level 12 -inHg and feed pressure 44 psi.

Vacuum flow

COAX® cartridge	Feed pressure* psi	Air consumption scfm	Vacuum flow (scfm) at different vacuum levels (-inHg)											Max vacuum -inHg
			0	3	6	9	12	15	18	21	24	27		
Pi48-2	44	4.24	5.93	5.30	3.81	2.33	1.38	1.06	0.74	0.53	0.21	—	27.0	
Pi48-3	45	4.34	11.9	5.30	3.81	2.33	1.38	1.06	0.74	0.53	0.21	—	27.0	
Si32-2	87	3.71	6.99	6.36	5.51	3.60	1.91	1.27	1.06	0.74	—	—	22.2	
Si32-3	87	3.71	12.7	7.42	5.51	3.60	1.91	1.27	1.06	0.74	—	—	22.2	
Xi40-2	65	3.88	5.93	4.87	3.39	2.12	1.55	1.23	0.91	0.68	0.38	0.06	28.1	
Xi40-3	65	3.88	12.5	6.36	4.24	2.75	1.55	1.23	0.91	0.68	0.38	0.06	28.1	

For vacuum flows at other feed pressures, see COAX® cartridge data sheets. *Feed pressure tolerance, +/- 1.45 psi

Evacuation time

COAX® cartridge	Feed pressure* psi	Air consumption scfm	Evacuation time (s/cf) to reach different vacuum levels (-inHg)										Max vacuum -inHg
			3	6	9	12	15	18	21	24	27		
Pi48-2	44	4.24	0.85	1.98	3.68	7.37	13.0	19.8	28.3	45.3	113	27.0	
Pi48-3	44	4.24	0.57	1.70	3.40	7.08	12.7	19.8	28.3	45.3	113	27.0	
Si32-2	87	3.71	0.85	1.98	2.83	5.10	9.35	15.0	22.7	—	—	22.2	

Si32-3	87	3.71	0.57	1.42	2.83	5.10	9.35	15.0	22.7	—	—	22.2
Xi40-2	65	3.88	1.13	2.55	4.82	7.93	12.5	17.8	25.5	36.8	65.2	28.1
Xi40-3	65	3.88	0.62	1.76	3.40	6.23	10.5	16.1	23.8	34.0	62.3	28.1

For evacuation times at other feed pressures, see COAX® cartridge data sheets. *Feed pressure tolerance, +/- 1.45 psi

Blow flow

COAX® cartridge	Feed pressure psi	Air consumption scfm	Blow flow (scfm) at different pressure levels (psi)												Max pressure psi
			0	3	6	9	10	12	13	15	16	17	19	20	
Pi48-2	87	7.42	13.0	13.0	12.6	10.7	9.51	9.51	9.51	9.51	9.51	9.03	8.48	7.69	20
Pi48-3	87	7.52	20.1	13.8	12.7	11.2	9.96	9.75	9.75	9.75	9.54	9.11	8.48	7.84	20
Si32-2	87	3.71	10.7	9.01	6.99	5.62	4.98	4.17	—	—	—	—	—	—	12
Si32-3	87	3.71	16.5	9.75	6.99	5.72	4.87	3.81	—	—	—	—	—	—	12
Xi40-2	87	4.94	10.8	9.75	7.20	6.99	6.57	5.93	5.09	—	—	—	—	—	13
Xi40-3	87	4.94	17.9	10.8	8.31	7.18	6.84	6.25	5.47	—	—	—	—	—	13

For performance graphs, see COAX® cartridge data sheets.

Ordering information

1. Select Housing

	P5010 code
Housing, connection Ø 10 mm	00
Housing, connection Ø 3/8"	01

2. COAX® push-in modules

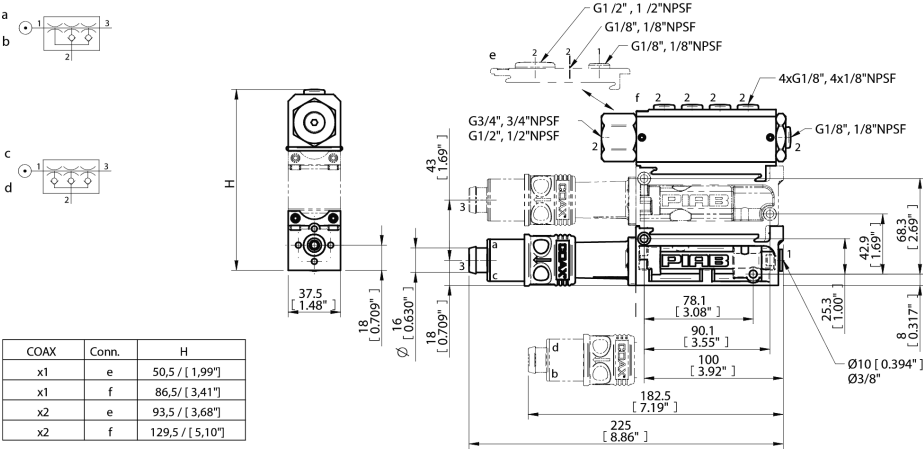
	P5010 Code
b COAX® push-in module Pi48-2X1	AI
a COAX® push-in module Pi48-3X1	AJ
d COAX® push-in module Pi48-2X1, non-return valve	AK
c COAX® push-in module Pi48-3X1, non-return valve	AL
b COAX® push-in module Pi48-2X2	AM
a COAX® push-in module Pi48-3X2	AN
d COAX® push-in module Pi48-2X2, non-return valve	AO
c COAX® push-in module Pi48-3X2, non-return valve	AP
b COAX® push-in module Si32-2X1	AA
a COAX® push-in module Si32-3X1	AB
d COAX® push-in module Si32-2X1, non-return valve	AC
c COAX® push-in module Si32-3X1, non-return valve	AD
b COAX® push-in module Si32-2X2	AE
a COAX® push-in module Si32-3X2	AF
d COAX® push-in module Si32-2X2, non-return valve	AG
c COAX® push-in module Si32-3X2, non-return valve	AH
b COAX® push-in module Xi40-2X1	AQ
a COAX® push-in module Xi40-3X1	AR
d COAX® push-in module Xi40-2X1, non-return valve	AS
c COAX® push-in module Xi40-3X1, non-return valve	AT
b COAX® push-in module Xi40-2X2	AU
a COAX® push-in module Xi40-3X2	AV
d COAX® push-in module Xi40-2X2, non-return valve	AW
c COAX® push-in module Xi40-3X2, non-return valve	AX

3. Select connection and function module

	P5010 Code
e Connection module low, G connection	01
f Connection module high, G connection	02
e Connection module low, NPSF connection	03
f Connection module high, NPSF connection	04
Function AVM™2 NO, G connection	05
Function AVM™2 NC (power off - NO), G connection	06
Function AVM™2 NO, NPSF connection	07
Function AVM™2 NC (power off - NO), NPSF connection	08
Function CU NC, G connection	09
Function CU NC, NPSF connection	10
Function P5010 ES 2/2 NO large hysteresis	11
Function P5010 ES 2/2 NO small hysteresis	12

Function AVM™2 NO, automatic blow-off (1 sec), G connection	13
Function AVM™2 NC, automatic blow-off (1 sec), G connection	14
Function AVM™2 NC 2 (power off - NC), G connection	15
Function AVM™2 NO, automatic blow-off (1 sec), NPSF connection	16
Function AVM™2 NC, automatic blow-off (1 sec), NPSF connection	17
Function AVM™2 NC 2 (power off - NC), NPSF connection	18
For detailed information on AVM™2, CU and ES, see separate datasheets.	

Example	Ordering number
Housing, connection Ø 10 mm Pi48-2X1, Connection module, low G threads	P5010 00 AI 01



COAX	Conn.	H
x1	e	50,5 [1,99"]
x1	f	86,5 [3,41"]
x2	e	93,5 [3,68"]
x2	f	129,5 [5,10"]

Ordering information, accessories	
Description	Part. No.
Common feed adapter Ø10 mm P5010	01.17.762
Common feed adapter Ø 3/8" P5010	01.18.349
Mounting rail DIN P5010	01.17.763
Mounting rail x1 P5010	01.18.209
Mounting rail x2 P5010	01.18.208
Vacuum gauge 30 -inHg/100 -kPa	01.12.531
Vacuum gauge recommended with high connection modules (02/04)	