

Container module half 21, 33 & 56



Container module half 21, 33 & 56



- To weld on receiving hopper or suction point.

Technical data

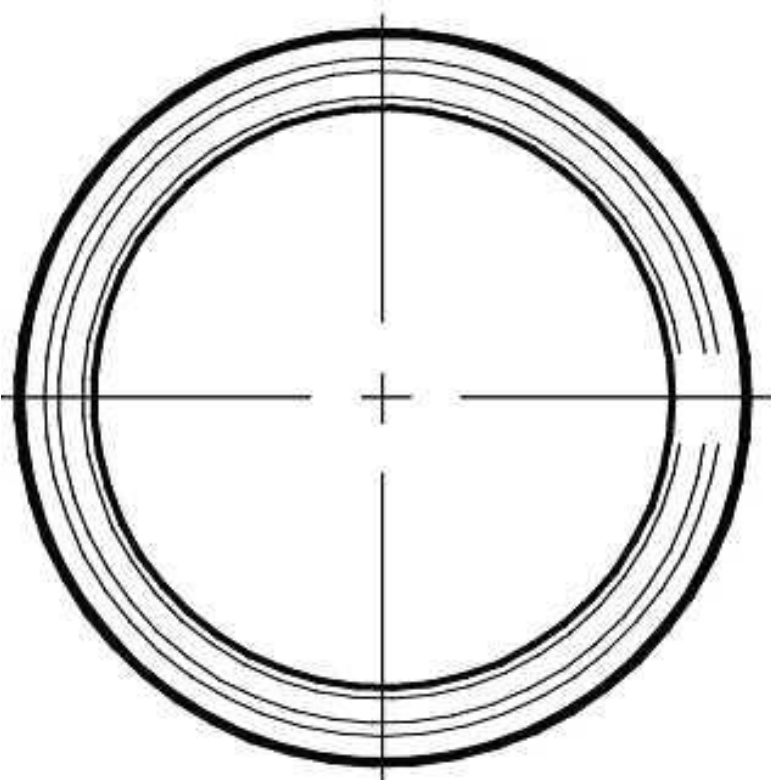
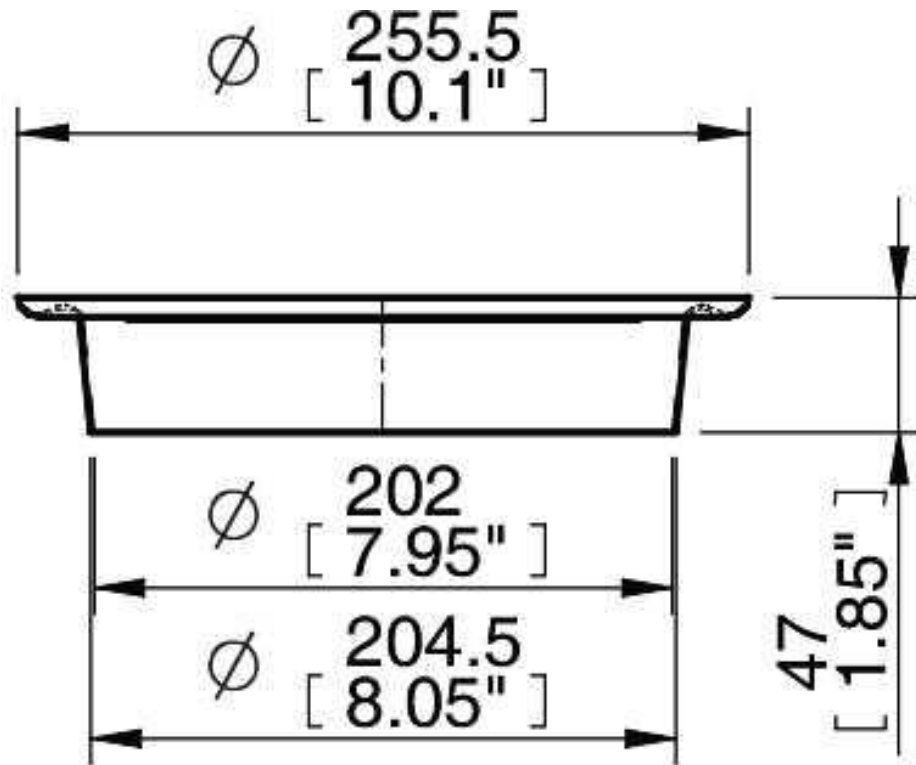
Description	Unit	Value
Material		ASTM 316L
Finish	Ra	0.6

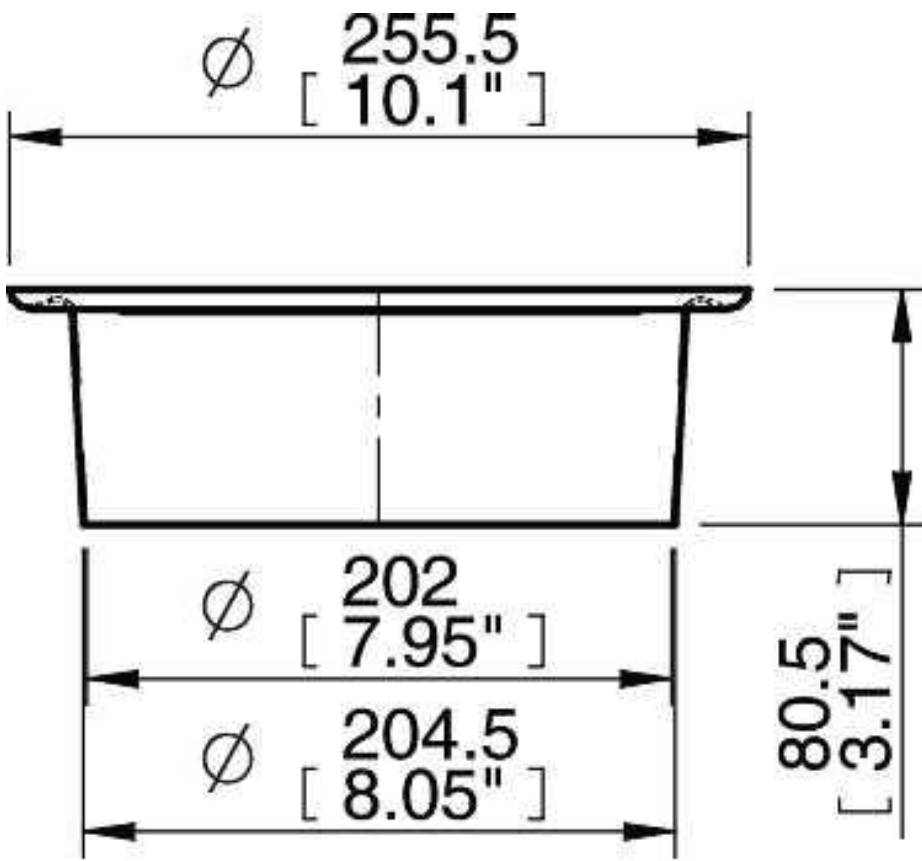
Technical data, specific

Description	Unit	Value				
		01.07.512	01.07.511	01.07.509	01.07.510	01.08.526
Volume	cf	0.06	0.10	0.18	0.38	0.67
Weight	lb	1.01	1.45	1.87	3.43	4.64

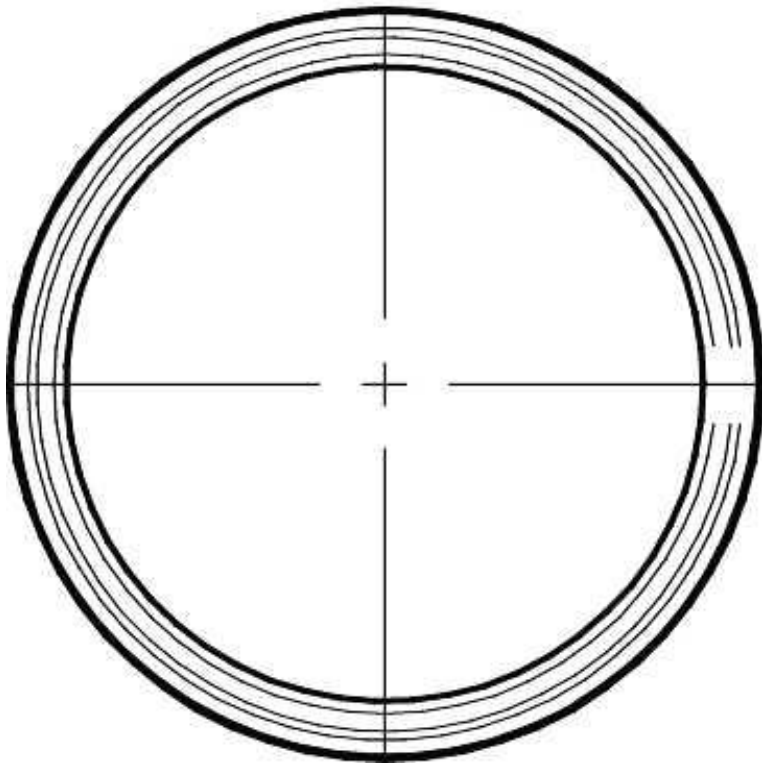
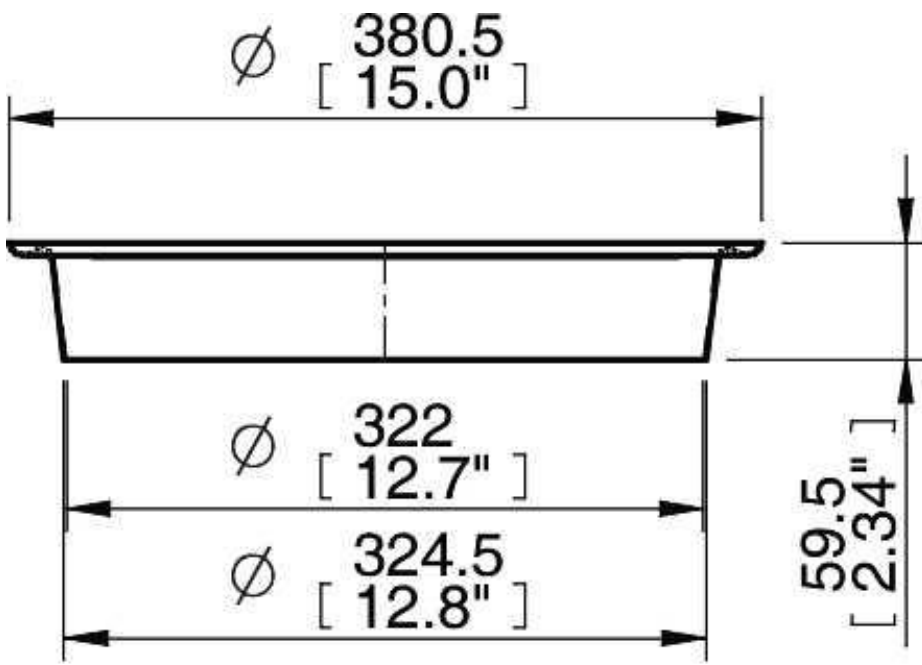
Ordering information

	Description	Part No.
A	Container module half 21/5	01.07.512
B	Container module half 21/8	01.07.511
C	Container module half 33/6	01.07.509
D	Container module half 33/13	01.07.510
E	Container module half 56/8	01.08.526

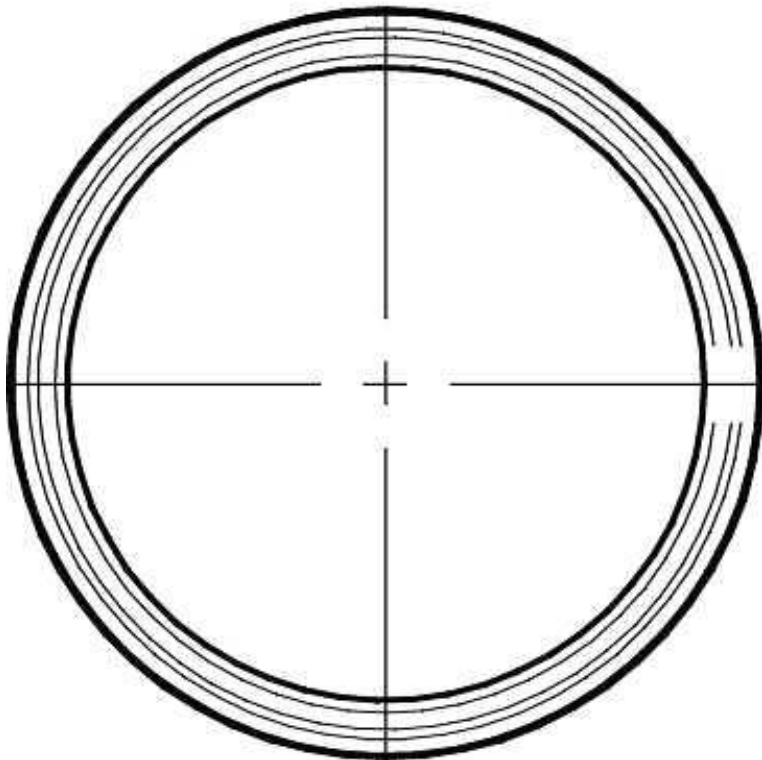
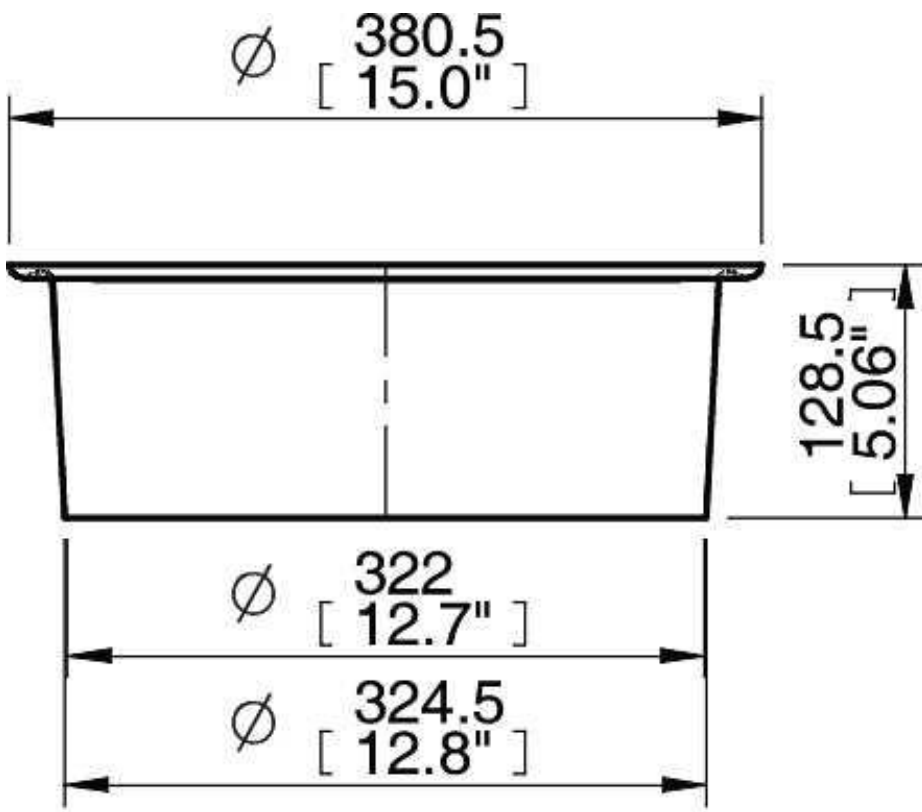




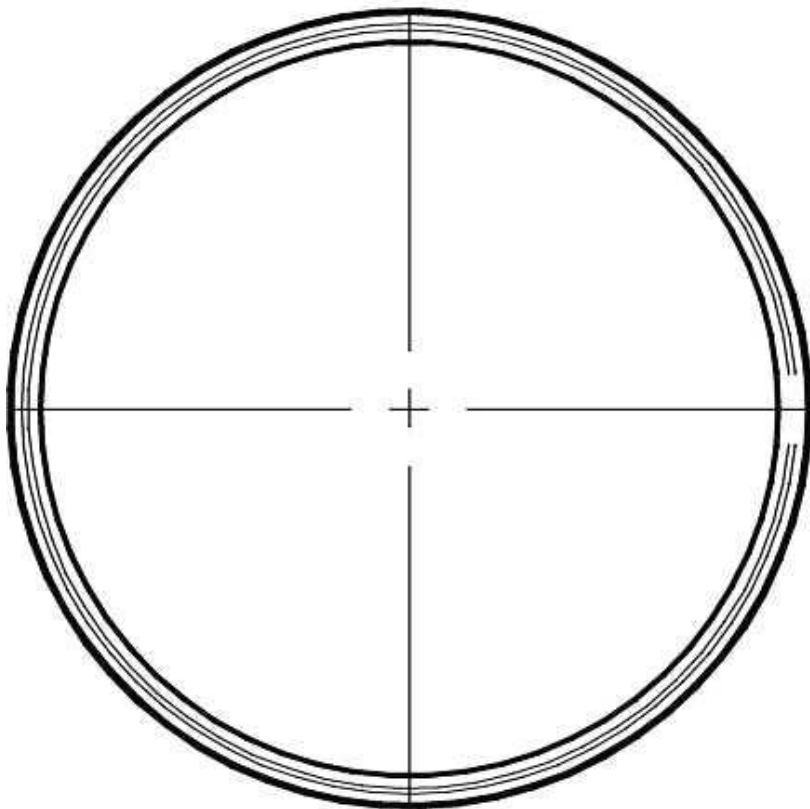
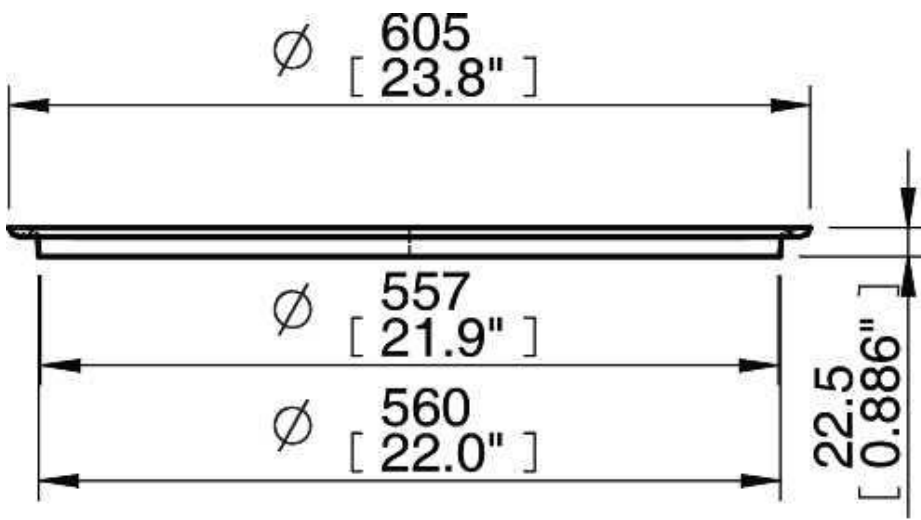
B



c



D



E

Ordering information,
accessories

Description	Part No.
Module seal 21 NBR	01.03.946/1
Module seal 21 Q	01.03.946/2
Clamp ring 21 cpl	01.03.972
Module seal 33 NBR	01.03.948/1
Module seal 33 Q	01.03.948/2
Clamp ring 33 cpl	01.03.977
Module seal 56 NBR	01.06.142/1
Module seal 56 Q	01.06.142/2
Clamp ring 56 cpl	01.06.127