

Pinch valves



Pinch valves



Technical data

| Description | Unit | Value |
|------------------------|------|-----------|
| Feed pressure, max | MPa | 0.4 |
| Feed pressure, closing | MPa | 0.18–0.20 |
| Temperature | °C | 0–60 |

Technical data, specific

| Description | Art. No. | Material | Weight kg |
|--|----------|------------------|-----------|
| Pinch valve DN20 (4 bar) internal thread | 3404676 | PP, EPDM | 0.180 |
| Pinch valve DN32 (4 bar) internal thread | 3404677 | PP, EPDM | 0.500 |
| Pinch valve DN25 (8 bar) internal thread | 3404624 | Al, Crude rubber | 0.400 |
| Pinch valve DN32 (8 bar) internal thread | 3404607 | Al, Crude rubber | 1.04 |
| Pinch valve DN40 (8 bar) internal thread | 3404625 | Al, Crude rubber | 1.45 |
| Pinch valve DN50 (8 bar) internal thread | 3404626 | Al, Crude rubber | 1.45 |
| Pinch valve DN65 (8 bar) internal thread | 3404627 | Al, Crude rubber | 1.45 |
| Pinch valve DN80 (8 bar) internal thread | 3404628 | Al, Crude rubber | 1.60 |
| Pinch valve DN40 (4 bar) hoses | 3404629 | Al, Crude rubber | 1.45 |
| Pinch valve DN50 (4 bar) hoses | 3404630 | Al, Crude rubber | 1.45 |
| Pinch valve DN65 (4 bar) hoses | 3404631 | Al, Crude rubber | 4.24 |
| Pinch valve DN80 (4 bar) hoses | 3404632 | Al, Crude rubber | 2.70 |
| Pinch valve DN100 (4 bar) hoses | 3404678 | Al, Crude rubber | 8.25 |

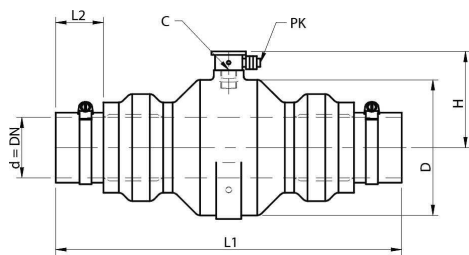
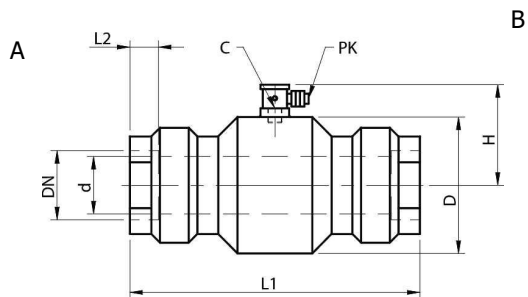
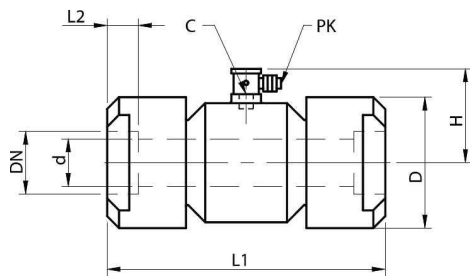
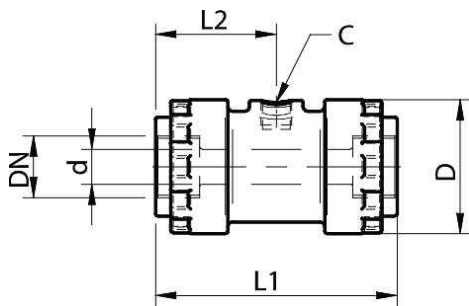
Dimensions

| Description | d mm | D mm | L1 mm | H mm | PK mm | DN G" | L2 mm | C G" |
|--|------|------|-------|------|-------|--------|-------|------|
| Pinch valve DN20 (4 bar) internal thread | 15 | 57 | 103 | — | — | 3/4" | 18 | 1/4" |
| Pinch valve DN32 (4 bar) internal thread | 30 | 89 | 140 | — | — | 1 1/4" | 22 | 1/4" |
| Pinch valve DN25 (8 bar) internal thread | 25 | 65 | 152 | 55 | 6 | 1" | 21 | 1/8" |
| Pinch valve DN32 (8 bar) internal thread | 32 | 88 | 189 | 63 | 6 | 1 1/4" | 21 | 1/8" |
| Pinch valve DN40 (8 bar) internal thread | 40 | 95 | 202 | 70 | 6 | 1 1/2" | 20 | 1/8" |
| Pinch valve DN50 (8 bar) internal thread | 50 | 114 | 210 | 81 | 8 | 2" | 20 | 1/4" |

| | | | | | | | | |
|--|-----|-----|-----|-----|---|--------|----|------|
| Pinch valve DN65 (8 bar) internal thread | 65 | 140 | 240 | 94 | 8 | 2 1/2" | 20 | 1/4" |
| Pinch valve DN80 (8 bar) internal thread | 80 | 160 | 285 | 109 | 8 | 3" | 20 | 1/4" |
| Pinch valve DN40 (4 bar) hoses | 40 | 95 | 282 | 70 | 6 | Ø40 | 40 | 1/8" |
| Pinch valve DN50 (4 bar) hoses | 50 | 114 | 290 | 81 | 6 | Ø 50 | 40 | 1/4" |
| Pinch valve DN65 (4 bar) hoses | 65 | 140 | 340 | 94 | 8 | Ø 65 | 50 | 1/4" |
| Pinch valve DN80 (4 bar) hoses | 80 | 160 | 385 | 109 | 8 | Ø 80 | 50 | 1/4" |
| Pinch valve DN100 (4 bar) hoses | 100 | 210 | 440 | 127 | 8 | Ø 100 | 50 | 1/2" |

Ordering information

| | Description | Art. No. |
|---|--|----------|
| A | Pinch valve DN20 (4 bar) internal thread | 3404676 |
| A | Pinch valve DN32 (4 bar) internal thread | 3404677 |
| B | Pinch valve DN25 (8 bar) internal thread | 3404624 |
| B | Pinch valve DN32 (8 bar) internal thread | 3404607 |
| C | Pinch valve DN40 (8 bar) internal thread | 3404625 |
| C | Pinch valve DN50 (8 bar) internal thread | 3404626 |
| C | Pinch valve DN65 (8 bar) internal thread | 3404627 |
| C | Pinch valve DN80 (8 bar) internal thread | 3404628 |
| D | Pinch valve DN40 (4 bar) hoses | 3404629 |
| D | Pinch valve DN50 (4 bar) hoses | 3404630 |
| D | Pinch valve DN65 (4 bar) hoses | 3404631 |
| D | Pinch valve DN80 (4 bar) hoses | 3404632 |
| D | Pinch valve DN100 (4 bar) hoses | 3404678 |



D