

# Cone 21 with pipe stud



## Cone 21 with pipe stud



- 21 interface to Piab piFLOW®p conveyors
- Hose or welding interface to customer equipment
- Popular stud interface dimensions to customer equipment
- Simplifies local adaptations

### Technical data

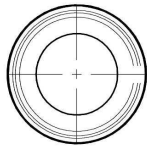
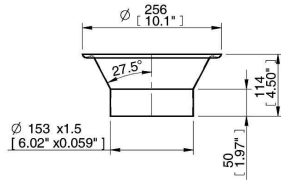
Description	Unit	Value
Material		ASTM 316L
Finish	Ra	0.6

### Technical data, specific

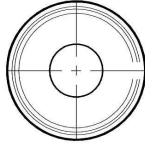
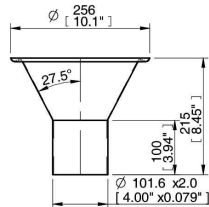
Description	Unit	Value			
		01.11.642	01.12.829	01.11.445	01.11.624
Volume	cf	5.72	6.57	5.93	5.72
Weight	lb	2.20	2.20	2.20	2.42

Ordering information

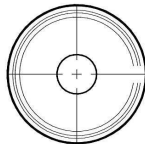
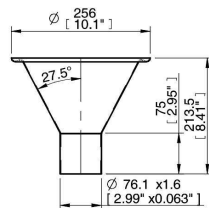
	Description	Part No.
A	Cone 21/16 with pipe stud $\varnothing 153 \times 1.5$	01.11.642
B	Cone 21/12 with pipe stud $\varnothing 101.6 \times 2.0$	01.12.829
C	Cone 21/14 with pipe stud $\varnothing 76.1 \times 1.6$	01.11.445
D	Cone 21/16 with pipe stud $\varnothing 51 \times 1.2$	01.11.624



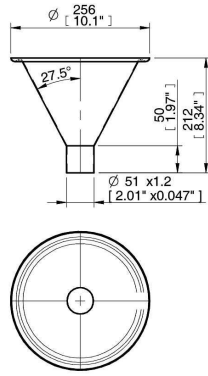
A



B



C



D

Ordering information,  
accessories

Description	Part No.
Module seal 21 NBR	01.03.946/1
Module seal 21 Q	01.03.946/2
Clamp ring 21 cpl	01.03.972
Hose clear PVC 50 per metre	34.04.131
Hose clear PVC 75 per metre	34.04.132
Hose clear PVC 100 per metre	34.04.133
Hose clamp D=50-65	31.13.824
Hose clamp D=77-95	02.01.809
Hose clamp D=104-138	31.13.825