

Cone 33 with pipe stud



Cone 33 with pipe stud

- 33 interface to Piab piFLOW®p conveyors
- Hose or welding interface to customer equipment
- Popular stud interface dimensions to customer equipment
- Simplifies local adaptations

Technical data

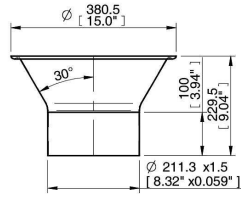
Description	Unit	Value
Material		ASTM 316L
Finish	Ra	0.6

Technical data, specific

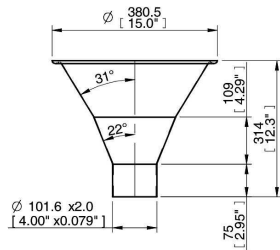
Description	Unit	Value		
		01.10.012	01.20.100	01.25.010
Volume	cf	23.3	20.6	19.9
Weight	lb	3.74	5.50	4.62

Ordering information

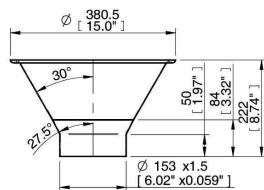
	Description	Part No.
A	Cone 33/23 with pipe stud $\varnothing 211.3 \times 1.5$	01.10.012
B	Cone 33/24 with pipe stud $\varnothing 101.6 \times 2.0$	01.20.100
C	Cone 33/22 with pipe stud $\varnothing 153 \times 1.5$	01.25.010



A



B



C

Ordering information, accessories

Description	Part No.
Module seal 33 NBR	01.03.948/1
Module seal 33 Q	01.03.948/2
Clamp ring 33 cpl	01.03.977
Hose clear PVC 100 per metre	34.04.133
Hose clamp D=104-138	31.13.825