

# Cone for welding



## Cone for welding

- 21 and 33 interface to Piab piFLOW®p conveyors
- Welding interface to customer equipment
- Popular interface dimensions to customer equipment
- Simplifies local adaptations

### Technical data

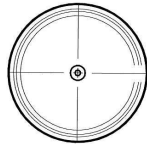
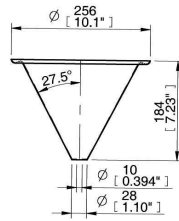
Description	Unit	Value
Material		ASTM 316L
Finish	Ra	0.6

### Technical data, specific

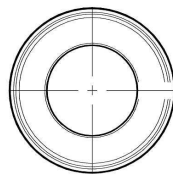
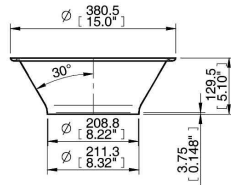
Description	Unit	Value	
		01.19.006	02.02.195
Volume	cf	5.51	16.1
Weight	lb	2.20	3.30

Ordering information

	Description	Part No.
A	Cone for welding 21/18	01.19.006
B	Cone for welding 33/13	02.02.195



A



B

Ordering information, accessories

Description	Part No.
Module seal 21 NBR	01.03.946/1
Module seal 21 Q	01.03.946/2
Clamp ring 21 cpl	01.03.972
Module seal 33 NBR	01.03.948/1
Module seal 33 Q	01.03.948/2
Clamp ring 33 cpl	01.03.977