

P3010 Solenoid Valve



P3010 Solenoid Valve



- Patented multistage COAX® cartridge - MINI - with Pi, Si, Xi cartridge.
- DS 23 3/2 valve suitable for compressed air, filtration 40µ
- 2.5 W solenoid
- Manual override
- Includes a flow-through silencer and a built-in vacuum filter for harsh environments.
- Slim, compact, configurable and modular design.
- Low weight.

Technical data

Description	Unit	Value
Feed pressure, max	MPa	0.6
Feed pressure	MPa	0.2–0.6
Material		PP, PA, NBR, Al, SS, Ni, POM, CuZn
Working temperature	°C	-10–50
Weight	g	210–485
Connection compressed air		D=6
Connection exhaust		D=6
Supply voltage	VDC	24
Safety classification, DIN (c) socket		IP65
Display		LED
Flow, nominal	NI/s	1.3
kv		1.2
Lifespan, mechanical	cycles	100,000,000
Power consumption	W	2.5
Load time rating	%	100
Electrical connection		DIN (c) socket

Vacuum flow

COAX® Cartridge	Feed pressure* MPa	Air consumption NI/s	Vacuum flow (NI/s) at different vacuum levels (-kPa)											Max vacuum -kPa
			0	10	20	30	40	50	60	70	80	90		
Pi12-3	0.314	0.44	1.40	0.60	0.44	0.27	0.19	0.14	0.10	0.060	0.030	—	90	
Si08-3	0.6	0.44	1.34	0.73	0.55	0.35	0.23	0.17	0.13	0.08	—	—	75	
Xi10-3	0.5	0.46	1.43	0.70	0.50	0.33	0.19	0.15	0.11	0.07	0.045	0.011	94	

For vacuum flows at other feed pressures, see COAX® Cartridge data sheets. *Feed pressure tolerance, +/- 0.01 MPa

Evacuation time

COAX® Cartridge	Feed pressure*	Air consumption	Evacuation time (s/l) to reach different vacuum levels (-kPa)	Max vacuum
-----------------	----------------	-----------------	---	------------

	MPa	NI/s	10	20	30	40	50	60	70	80	90	-kPa
Pi12-3	0.314	0.44	0.08	0.23	0.49	1.00	1.70	2.60	3.90	6.30	—	90
Si08-3	0.6	0.44	0.10	0.25	0.48	0.80	1.30	2.30	4.60	—	—	75
Xi10-3	0.5	0.46	0.09	0.26	0.50	0.90	1.5	2.2	3.4	5.2	8.8	94

For evacuation times at other feed pressures, see COAX® Cartridge data sheets. *Feed pressure tolerance, +/- 0.01 MPa

Blow flow

COAX® cartridge	Feed pressure MPa	Air consumption NI/s	Blow flow (NI/s) at different pressure levels (kPa)												Max pressure kPa
			0	20	40	60	70	80	90	100	110	120	130	140	
Pi12-3	0.6	0.75	1.87	1.4	1.33	1.12	1.03	1.03	1.03	1.03	1.0	0.95	0.86	0.79	140
Si08-3	0.6	0.44	1.78	1.16	1.03	0.86	0.80	0.75	0.66	0.53	—	—	—	—	70
Xi10-3	0.6	0.54	1.8	1.3	1.1	0.98	0.85	0.84	0.79	0.71	0.61	—	—	—	90

Ordering information

1. Select housing P3010 Code

Housing, connection Ø=6 mm	00
----------------------------	----

2. COAX® cartridge modules P3010 Code

COAX® cartridge module Pi12-3FSx1	AE
COAX® cartridge module Pi12-3FSx1, non-return valve	AF
COAX® cartridge module Pi12-3FSx2	AG
COAX® cartridge module Pi12-3FSx2, non-return valve	AH
COAX® cartridge module Si08-3FSx1	AA
COAX® cartridge module Si08-3FSx1, non-return valve	AB
COAX® cartridge module Si08-3FSx2	AC
COAX® cartridge module Si08-3FSx2, non-return valve	AD
COAX® cartridge module Xi10-3FSx1	AI
COAX® cartridge module Xi10-3FSx1, non-return valve	AJ
COAX® cartridge module Xi10-3FSx2	AK
COAX® cartridge module Xi10-3FSx2, non-return valve	AL

3. Select connection and function module P3010 Code

B	Connection module high 6x1/8"	01
A	Connection module low 3x1/8"	02
	Function Quick-release connection, 10 and 6 mm, 3 cm ³	04
	Function Quick-release connection, 8 and 6 mm, 30 cm ³	05
	Function Quick-release connection, 8 and 6 mm, 60 cm ³	06
	Function Quick-release connection, 10 and 6 mm, 30 cm ³	07
	Function Quick-release connection, 10 and 6 mm, 60 cm ³	08
	Function Quick-release connection, 8 and 6 mm, 3 cm ³	12

For detailed information on Quick-release, see separate datasheet.

4. Select ES P3010 Code

Valve DS23	AB
------------	----

5. Select vacuum sensing P3010 Code

No vacuum sensing	00
Vacuum switch, adjustable, PNP NO MM8	01
Vacuum switch, adjustable, NPN NO MM8	02
Vacuum switch, adjustable, PNP NO LM8	05
Vacuum switch, adjustable, PNP NO DM8	09
Vacuum switch, adjustable, NPN NO DM8	10
Vacuum switch inductive, adjustable with knob	11
Vacuum switch VS4015 Ø6, 30 -kPa	18
Vacuum switch VS4015 Ø6, 50 -kPa	19
Vacuum switch VS4015 Ø6, 70 -kPa	20
Vacuum switch VS4016 G1/8" male, 30 -kPa	21
Vacuum switch VS4016 G1/8" male, 50 -kPa	22

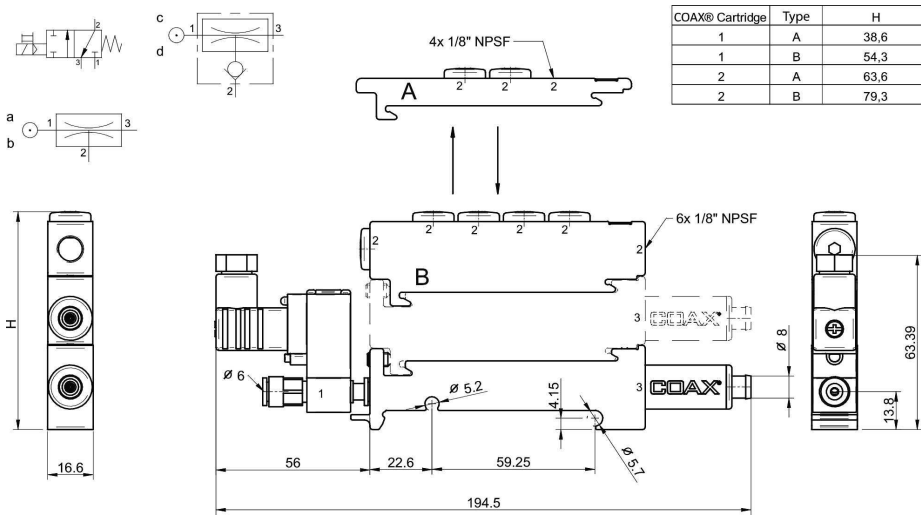
For detailed information on vacuum switches, see separate datasheets.

Example

Ordering number

Housing, connection Ø 6 mm Pi12-3FSx1, Connection module high 6 x 1/8", Solenoid valve DS23, no vacuum sensing

P3010.00.AE.01.AB.00



Ordering information, accessories

Description

Art. No.

Sealing kit P3010, NBR

0104201

The sealing kit includes flap valves, compressed air filter and vacuum filter.